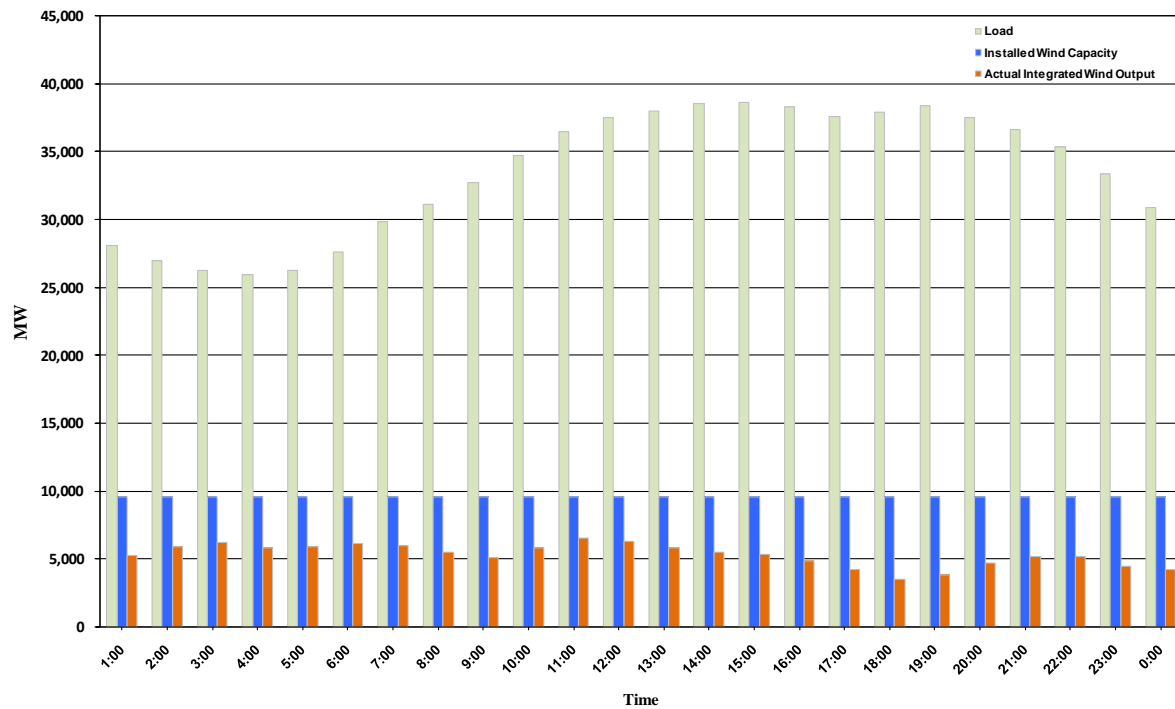




ERCOT Grid Operations Wind Integration Report: 11/24/10

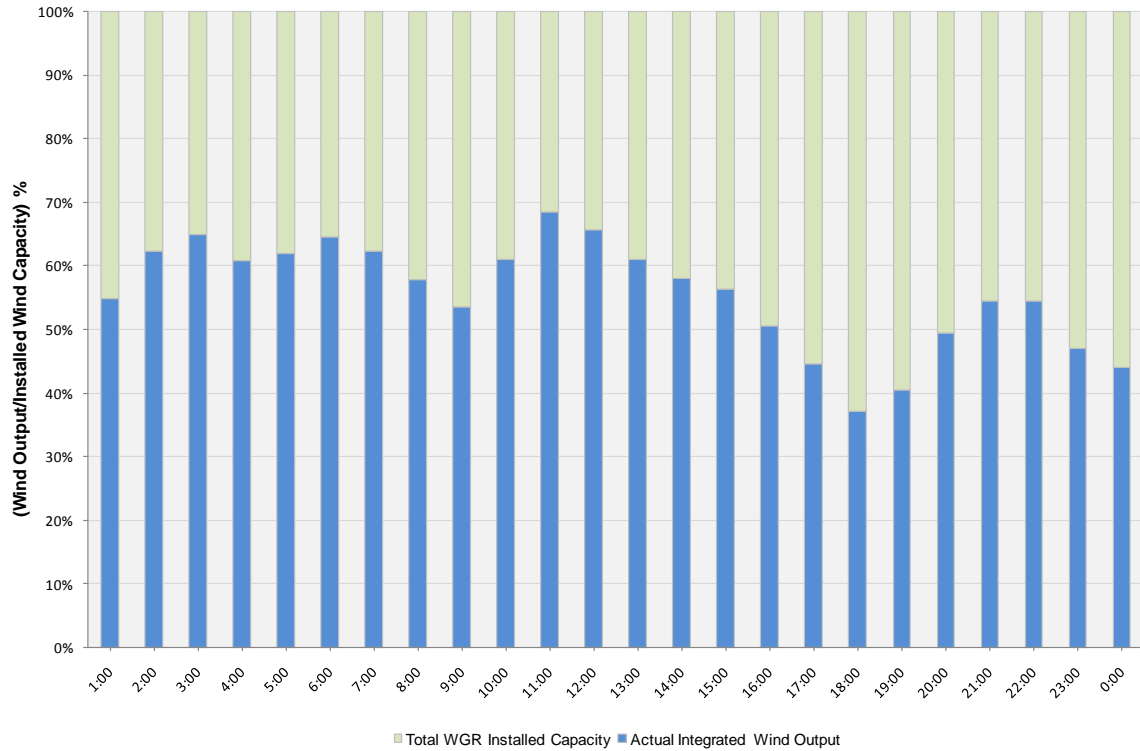
| | |
|----------------------|------------------|
| Peak Load | 38,623 MW |
| Load Peak Hour | 15 |
| Wind Record 06/12/10 | 7016 MW |
| Max Wind value | 6893 MW |
| Wind Peak Hour | 10:27:16 |
| Wind Integration % | 18.90 |

Hourly Average Actual Load vs. Actual Wind Output
11-24-2010

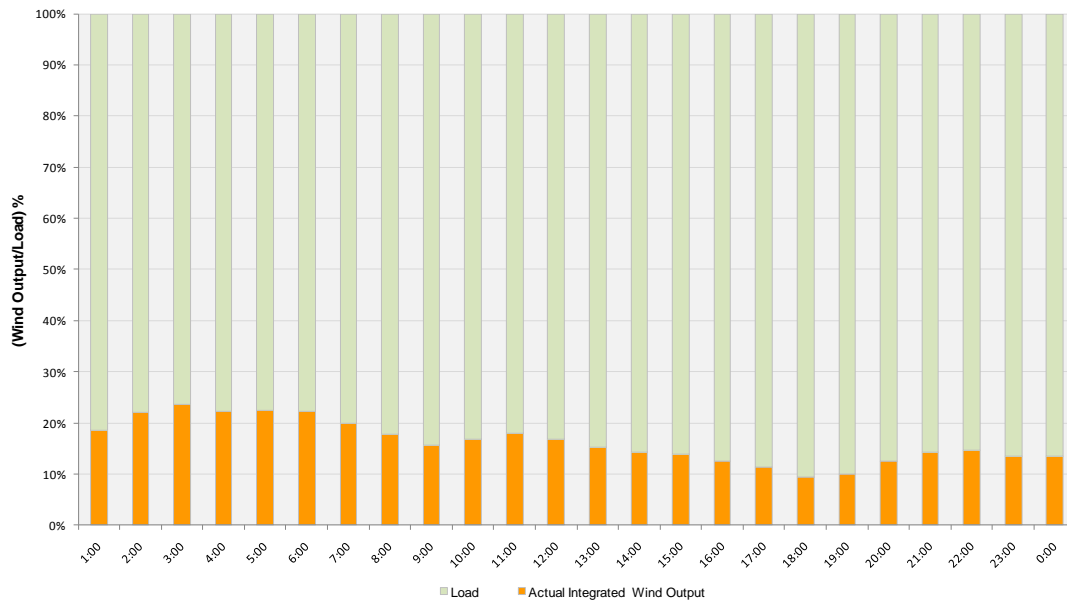




Actual Wind Output as a Percentage of the Total Installed Wind Capacity
11-24-2010



Actual Wind Output as a Percentage of the ERCOT Load
11-24-2010





ERCOT Load vs. Actual Wind Output 11/17/10 - 11/24/10

